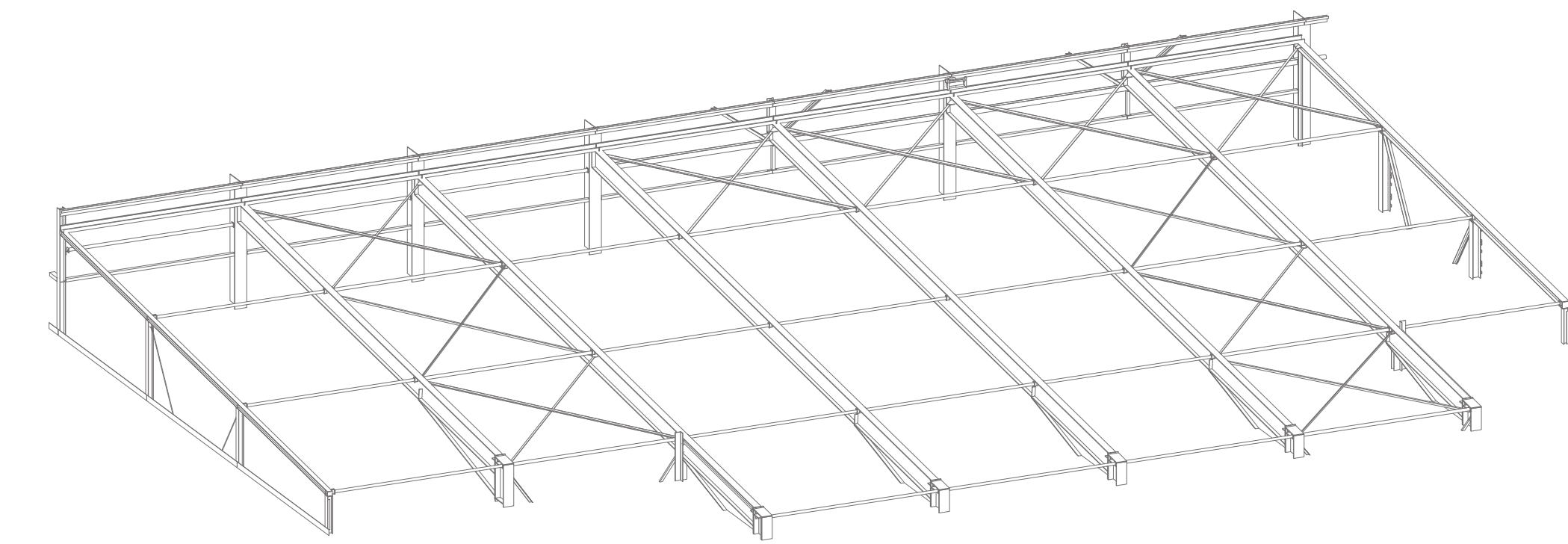
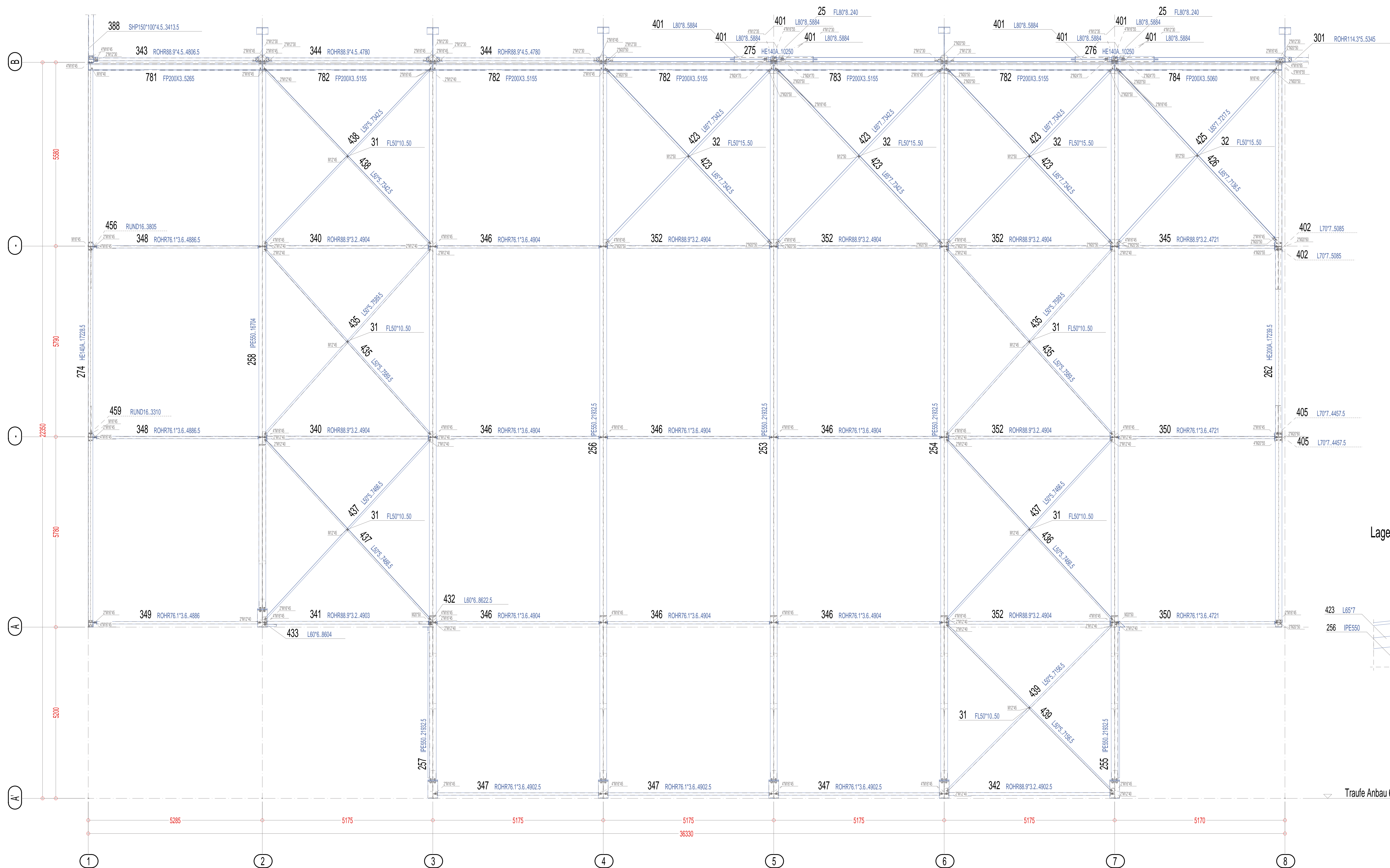


[illegible]

Technical drawing of a roof truss system, showing four corner details (268, 254, 423, 423) and a central cross-section (32). The drawing includes various structural components and dimensions:

- Top Left (268):** HE180A beam, IPE550 gable, Z140\*30 and Z140\*50 gables, L65\*7 fastener, M12\*30 and M12\*50 fasteners, 45° and 30° angles.
- Top Right (254):** IPE550 beam, Z140\*30 and Z140\*50 gables, L65\*7 fastener, M12\*30 and M12\*50 fasteners, 45° and 30° angles.
- Bottom Left (423):** L65\*7 beam, Z140\*30 and Z140\*50 gables, M12\*30 and M12\*50 fasteners, 45° and 30° angles.
- Bottom Right (423):** L65\*7 beam, Z140\*30 and Z140\*50 gables, M12\*30 and M12\*50 fasteners, 45° and 30° angles.
- Center (32):** FL50\*15 beam, Z140\*30 and Z140\*50 gables, L65\*7 fastener, M12\*30 and M12\*50 fasteners, 45° and 30° angles.
- Bottom Center (352):** ROHR88.9\*3.2 beam, Z140\*30 and Z140\*50 gables, L65\*7 fastener, M12\*30 and M12\*50 fasteners, 45° and 30° angles.



Technical drawing of a mechanical assembly. The drawing shows a shaft with a pulley and a belt. Dimensions are indicated: 35, 50, 101, and BL22\*350. Labels include M16\*45, M18\*45, and Z140750.

*Diese Zeichnung ist urheberrechtlich geschützt. Vervielfältigung o. Weitergabe an Dritte verboten!*